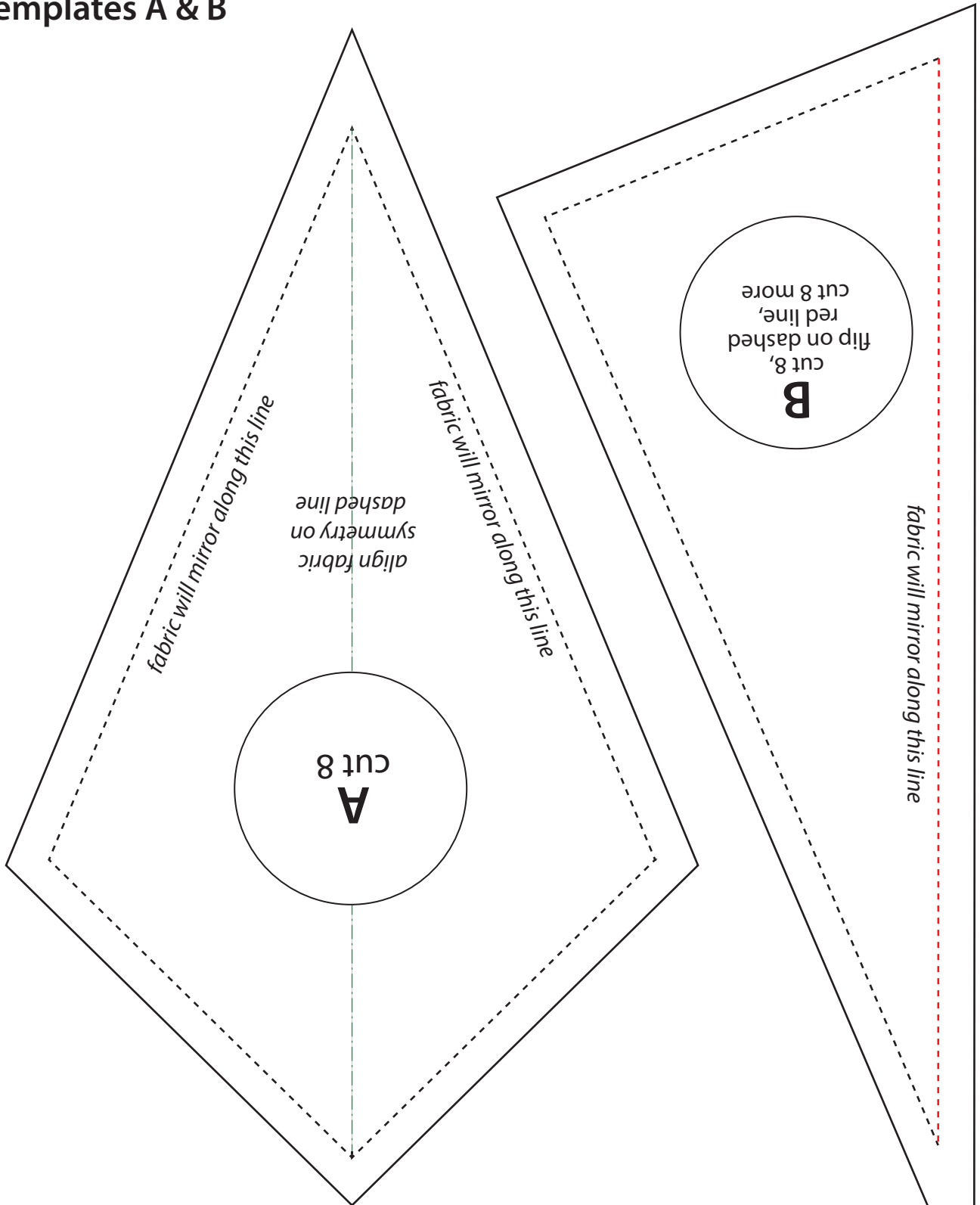


# Templates A & B

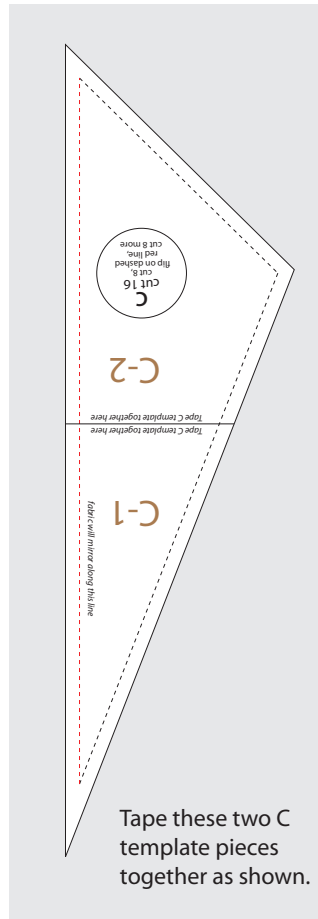
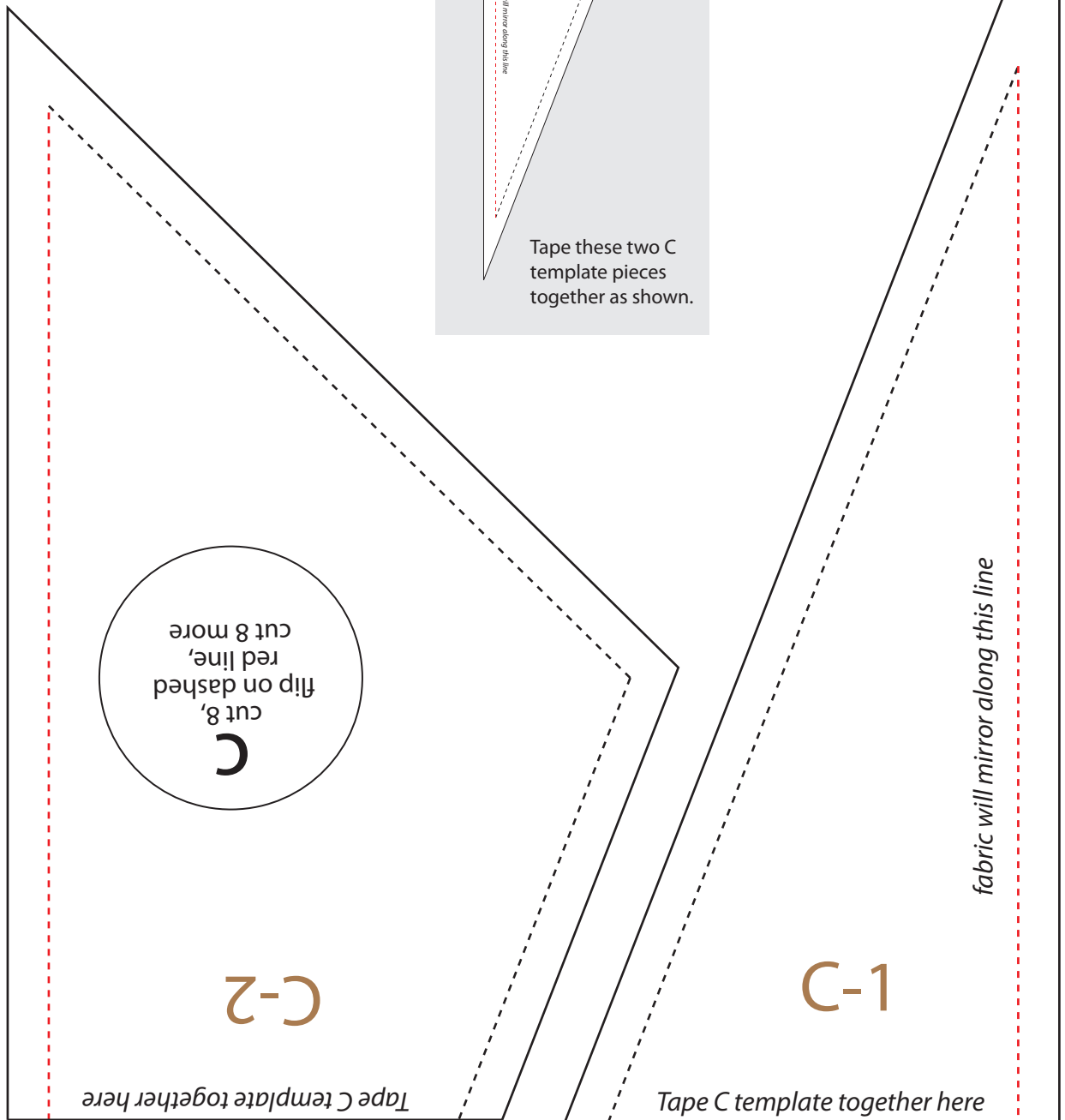


1"x1"  
test square

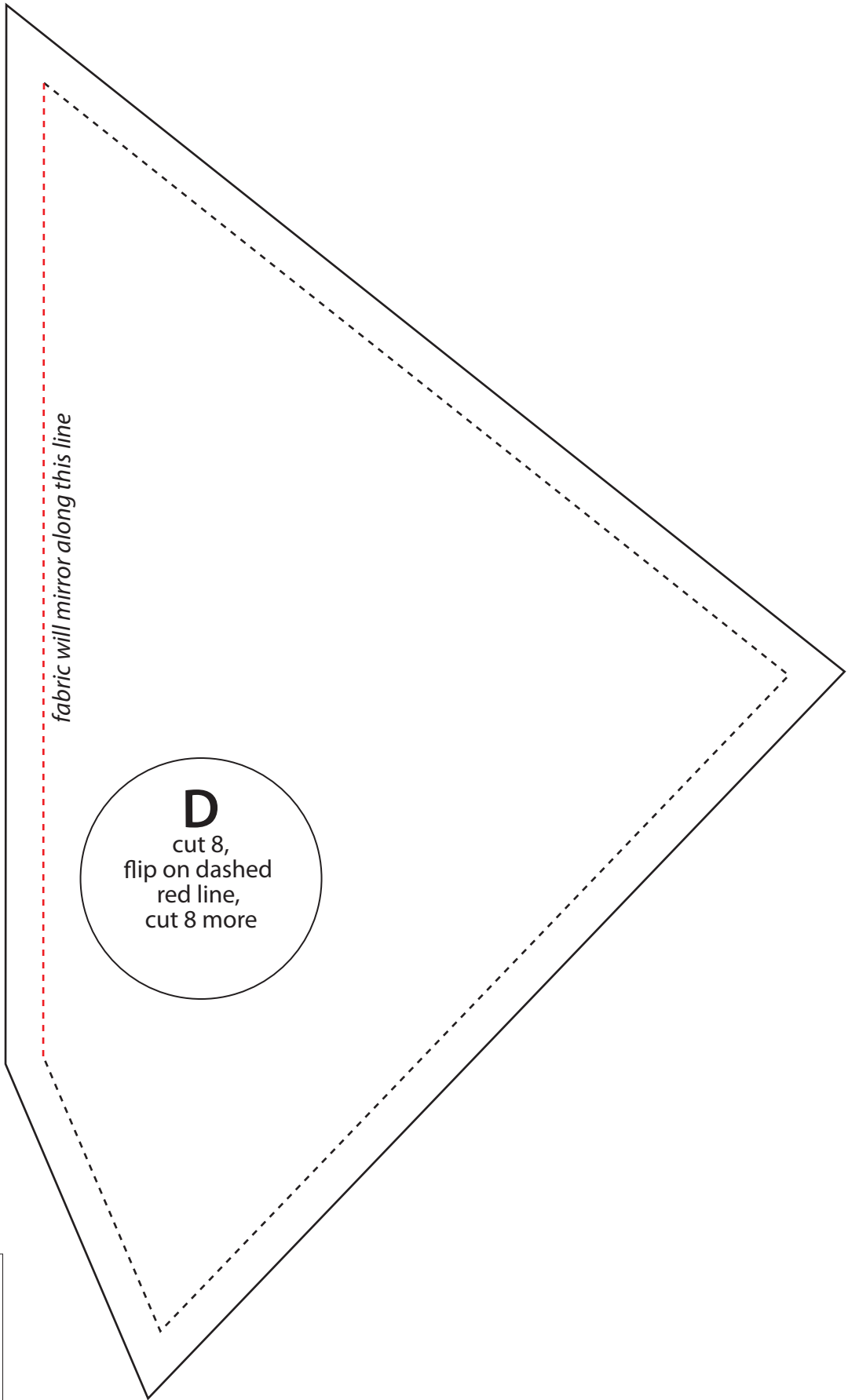
If it doesn't, check your printer settings. Many printers have an option that says something similar "shrink to fit" or "scale to fit" which resizes the printout to fit the page. If that is selected, turn it off and reprint the templates.

# Template C

1"x1"  
test square



# Template D

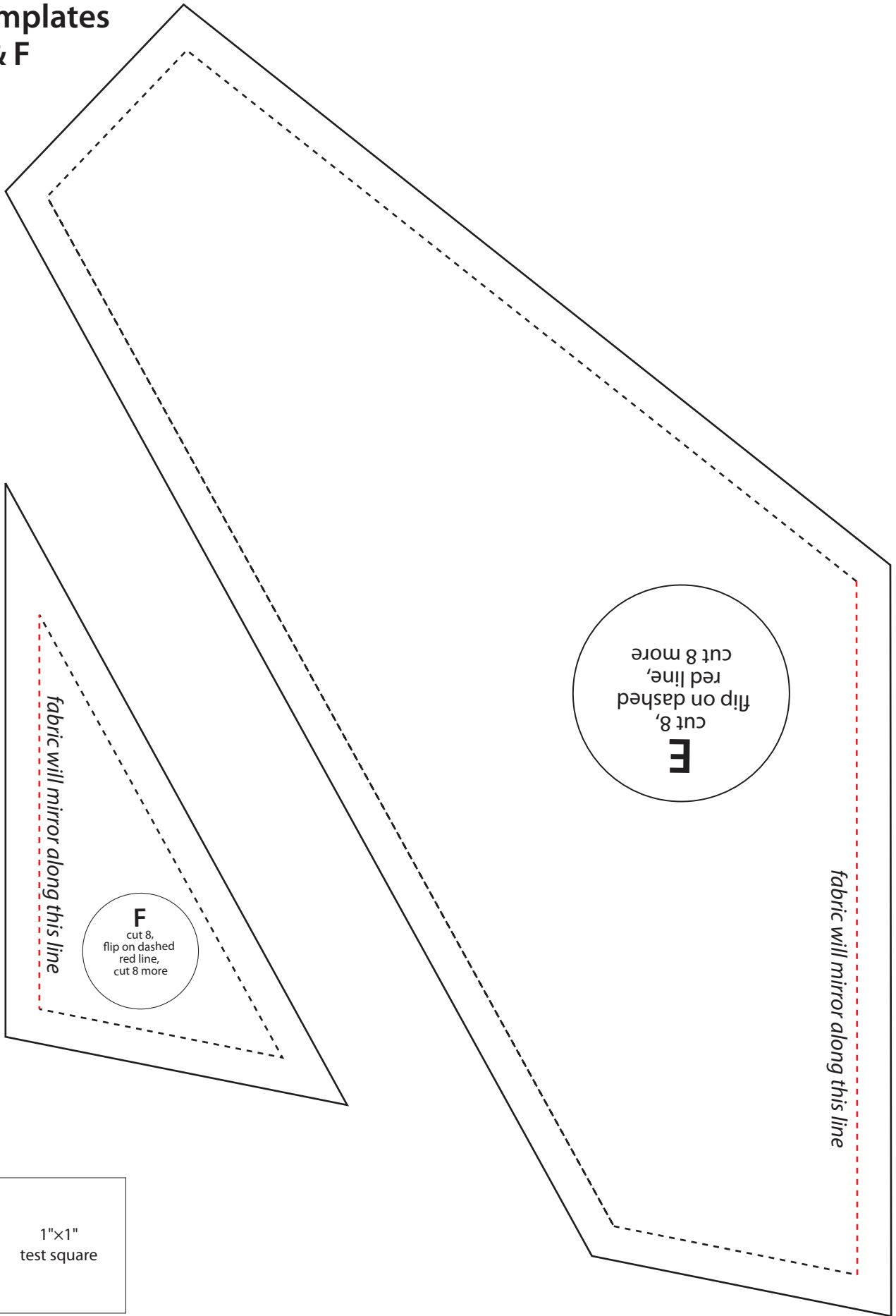


*fabric will mirror along this line*

**D**  
cut 8,  
flip on dashed  
red line,  
cut 8 more



# Templates E & F



**E**  
cut 8,  
flip on dashed  
red line,  
cut 8 more

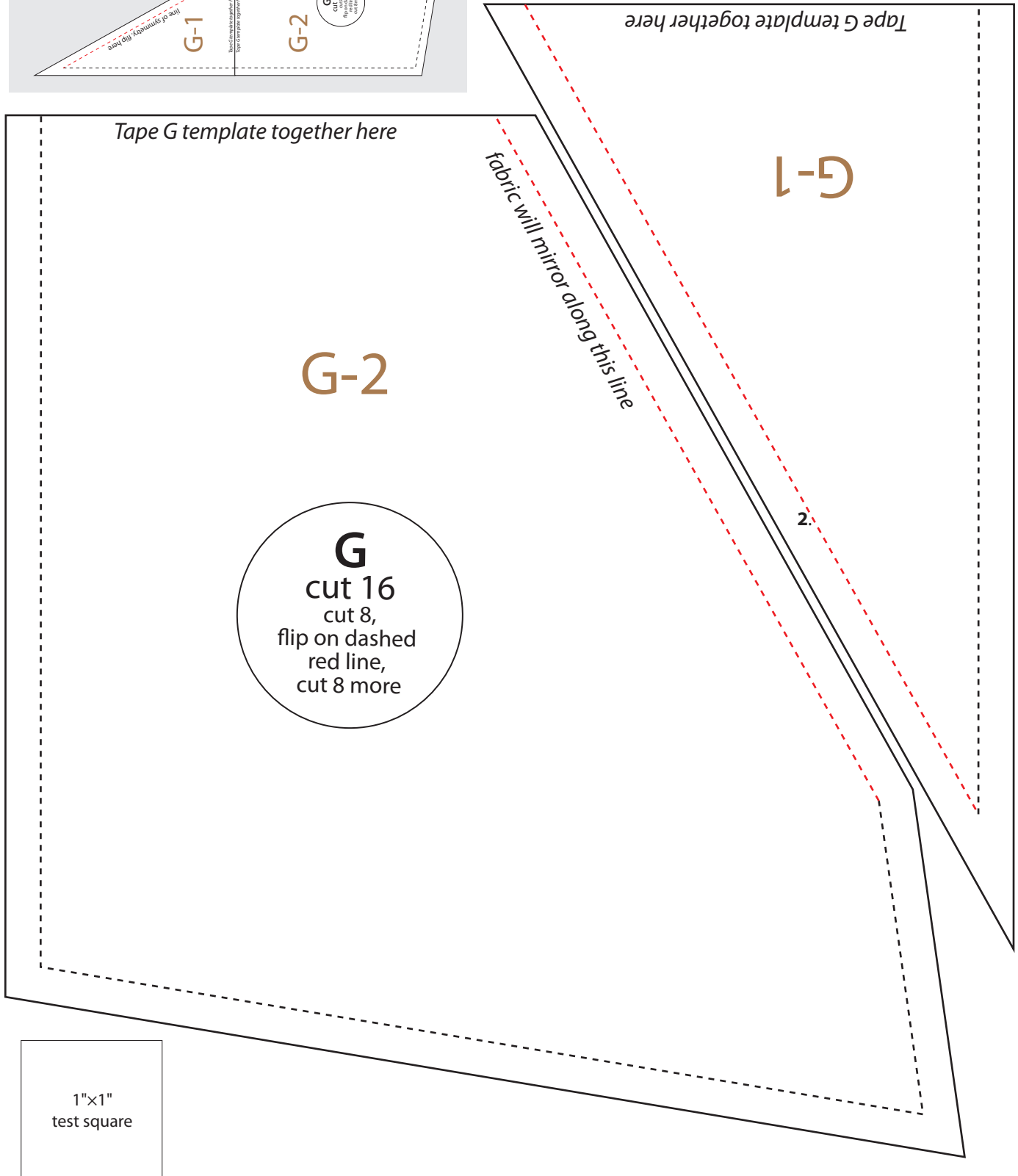
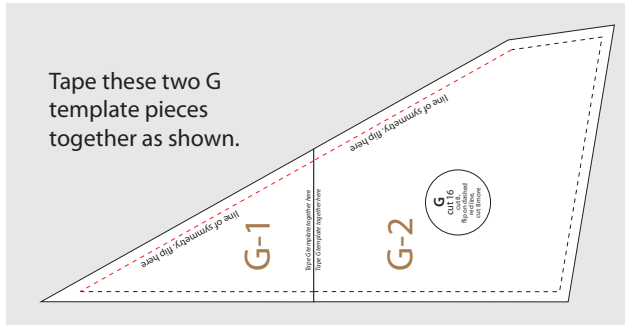
**F**  
cut 8,  
flip on dashed  
red line,  
cut 8 more

*fabric will mirror along this line*

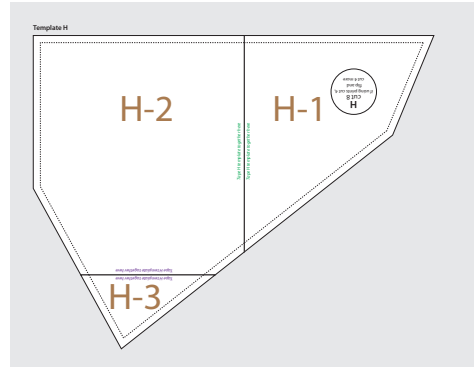
*fabric will mirror along this line*

1"x1"  
test square

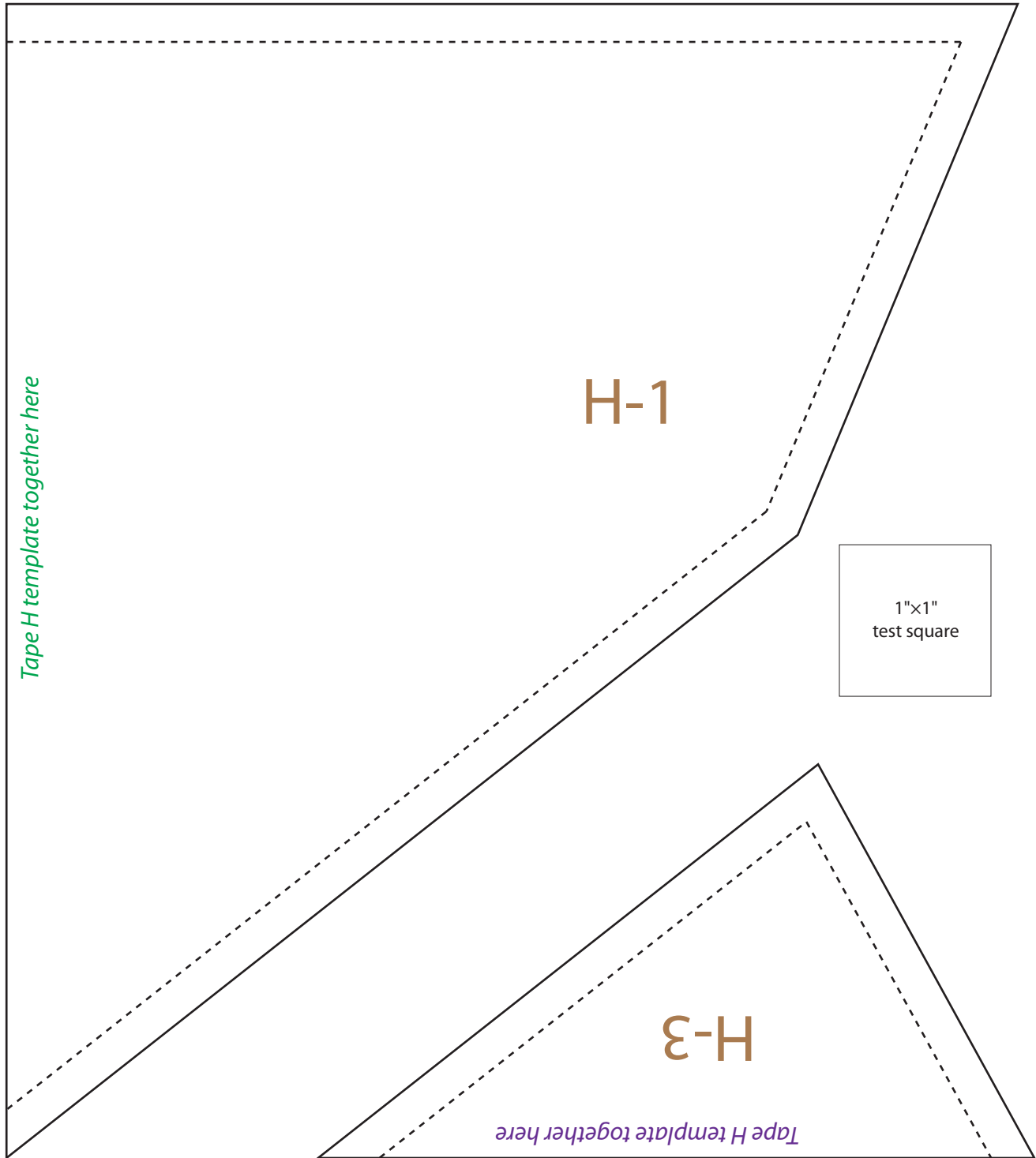
# Template G



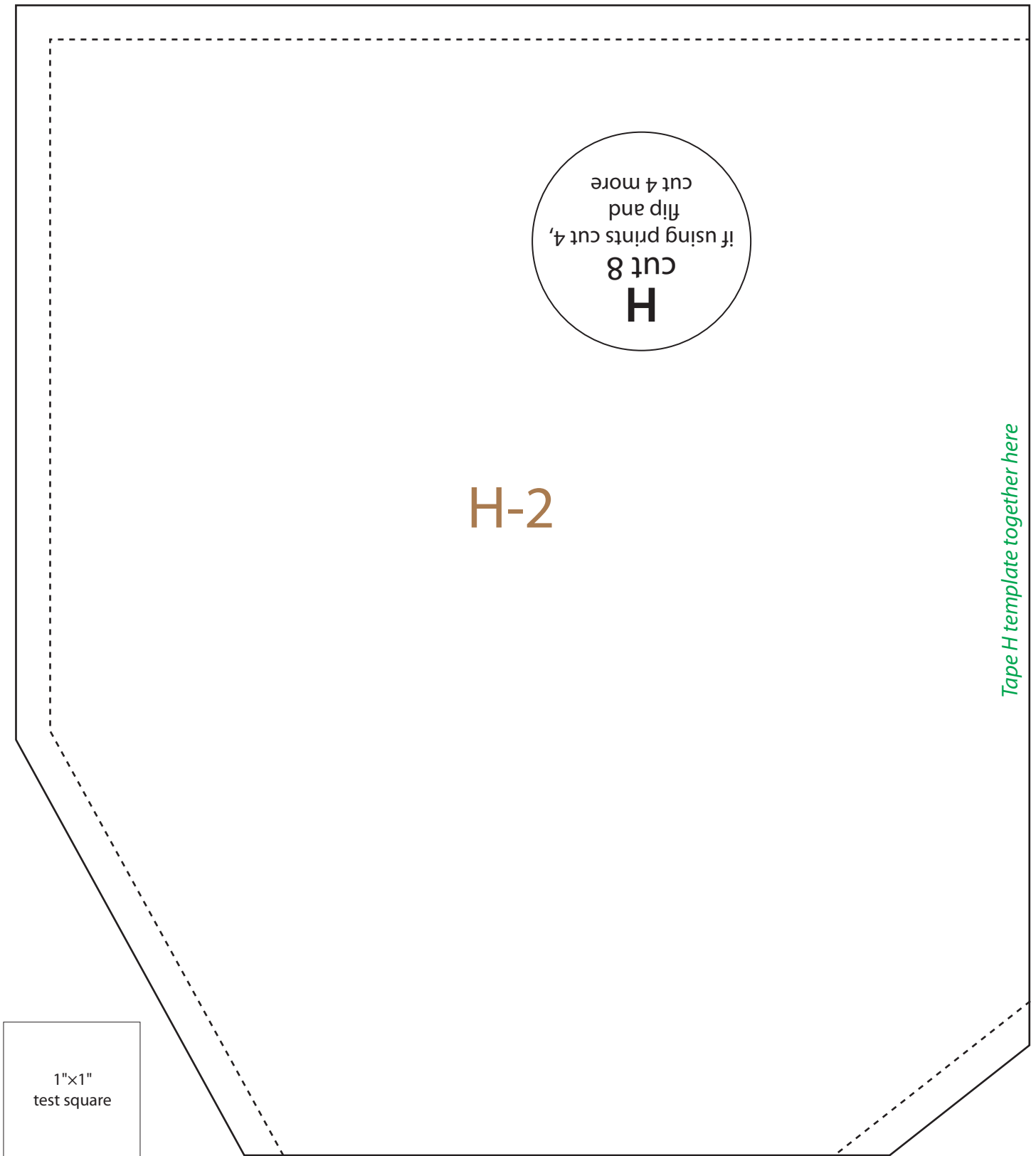
# Template H—page 1



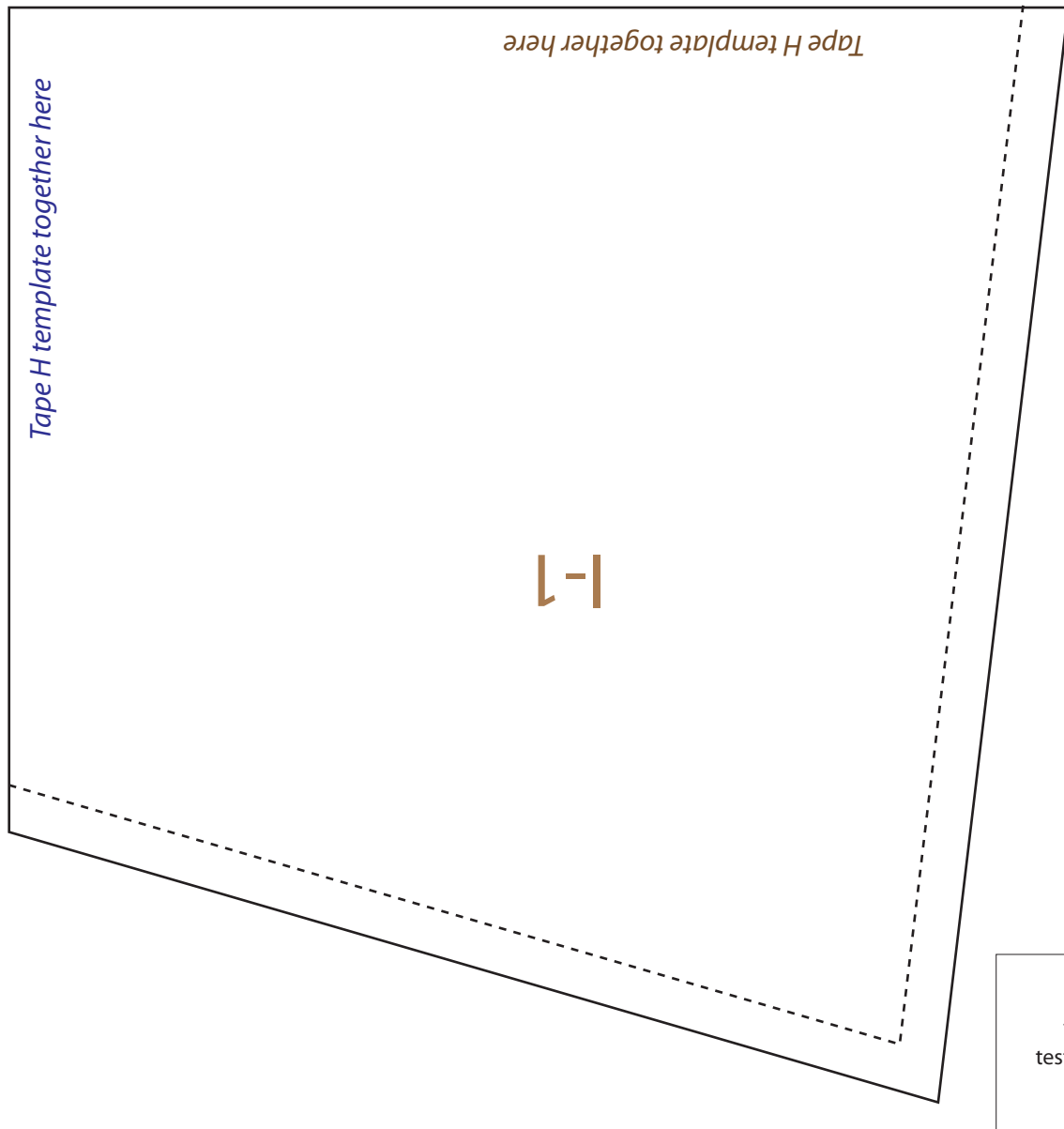
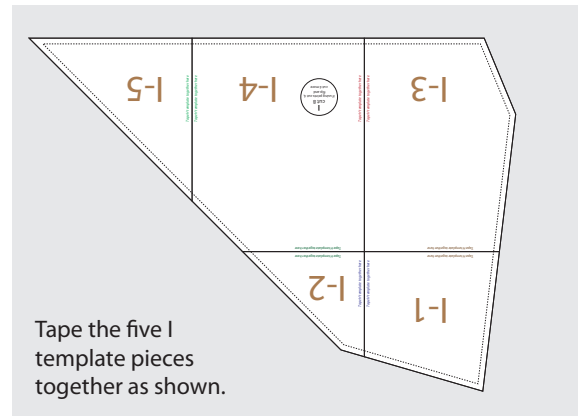
Tape the three H template pieces together as shown.



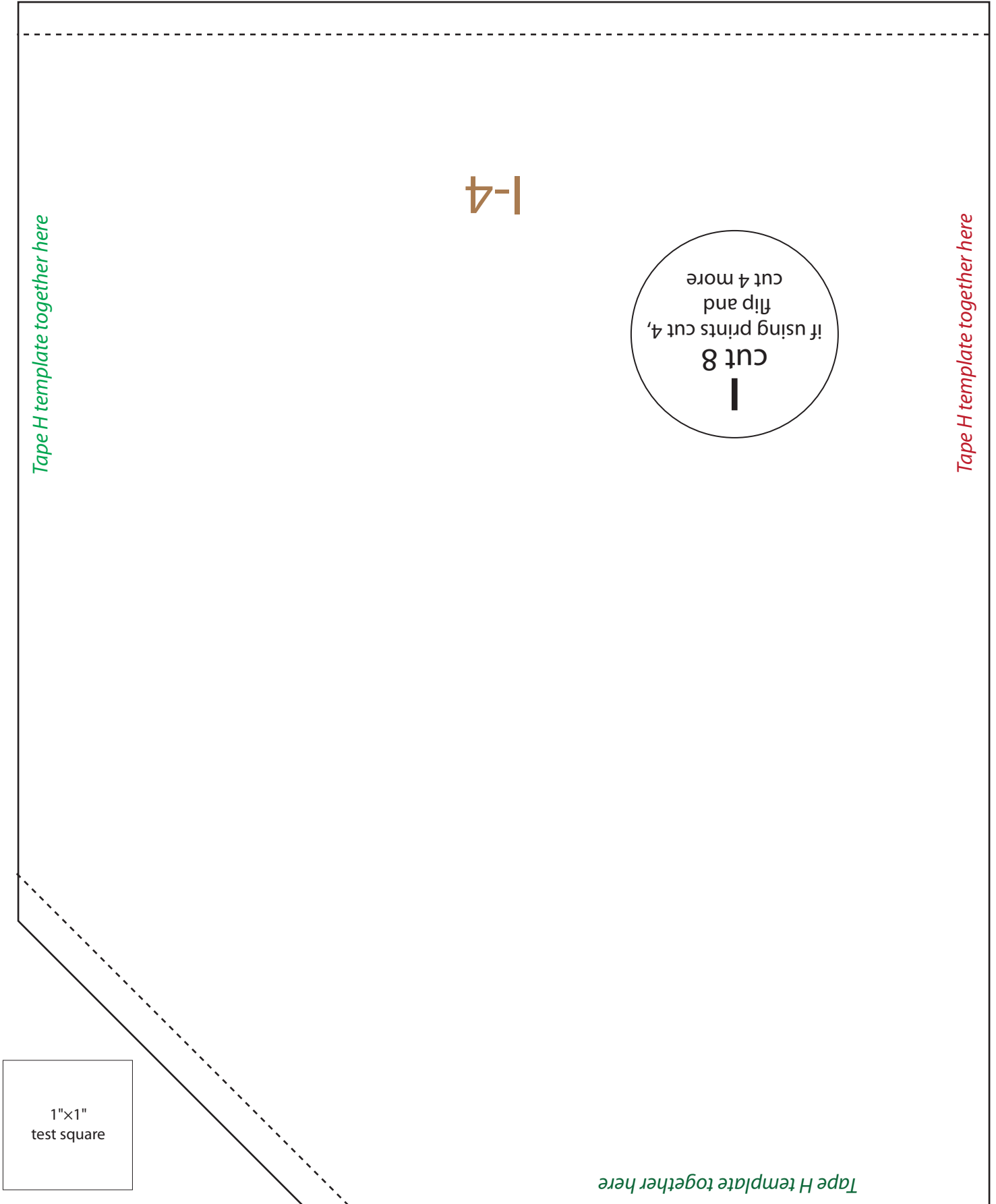
# Template H-page 2



# Template I—page 1



# Template I—page 2



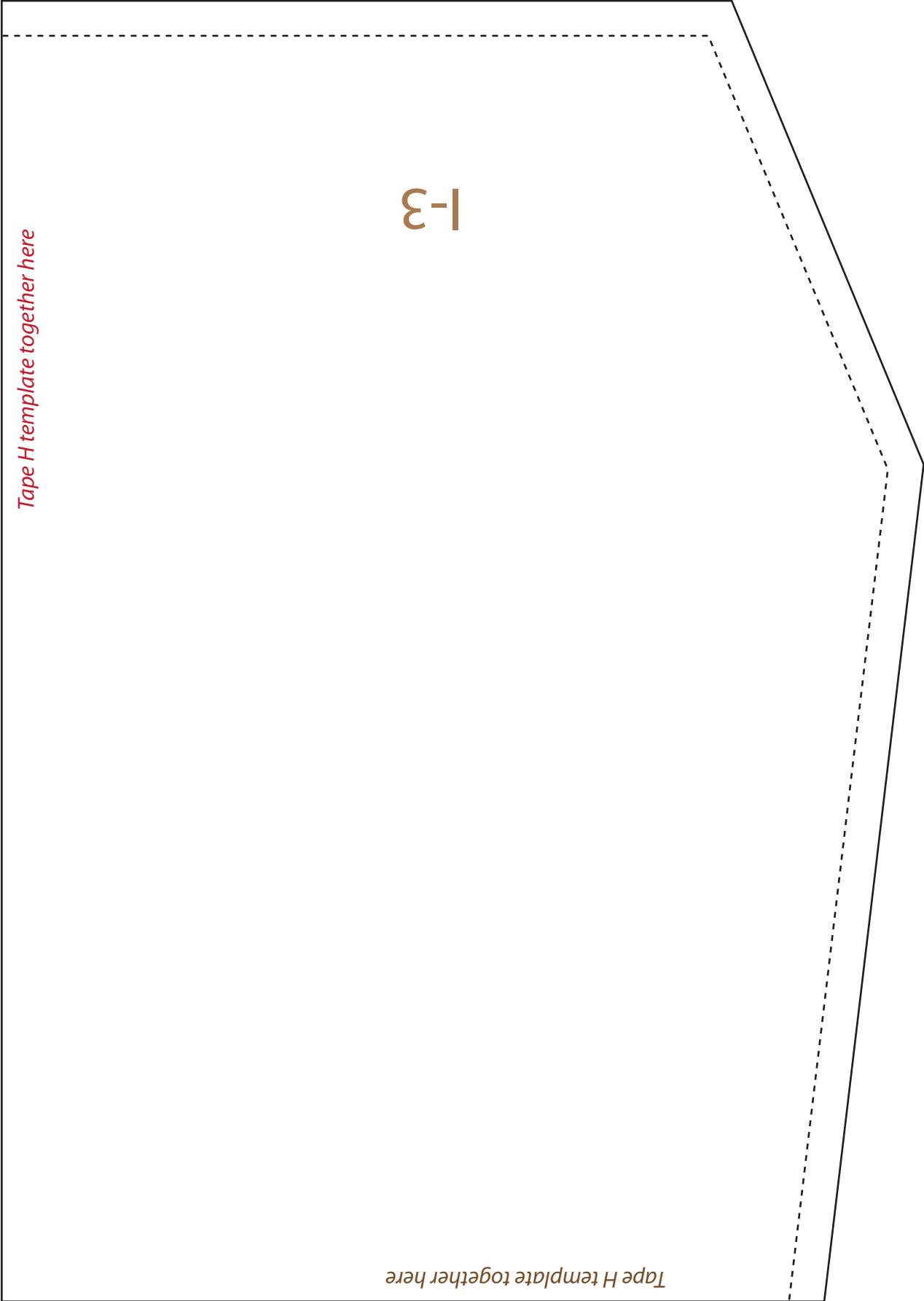
*Tape H template together here*

*Tape H template together here*

*Tape H template together here*

1"x1"  
test square

# Template I–page 3



# Template I—page 4

